

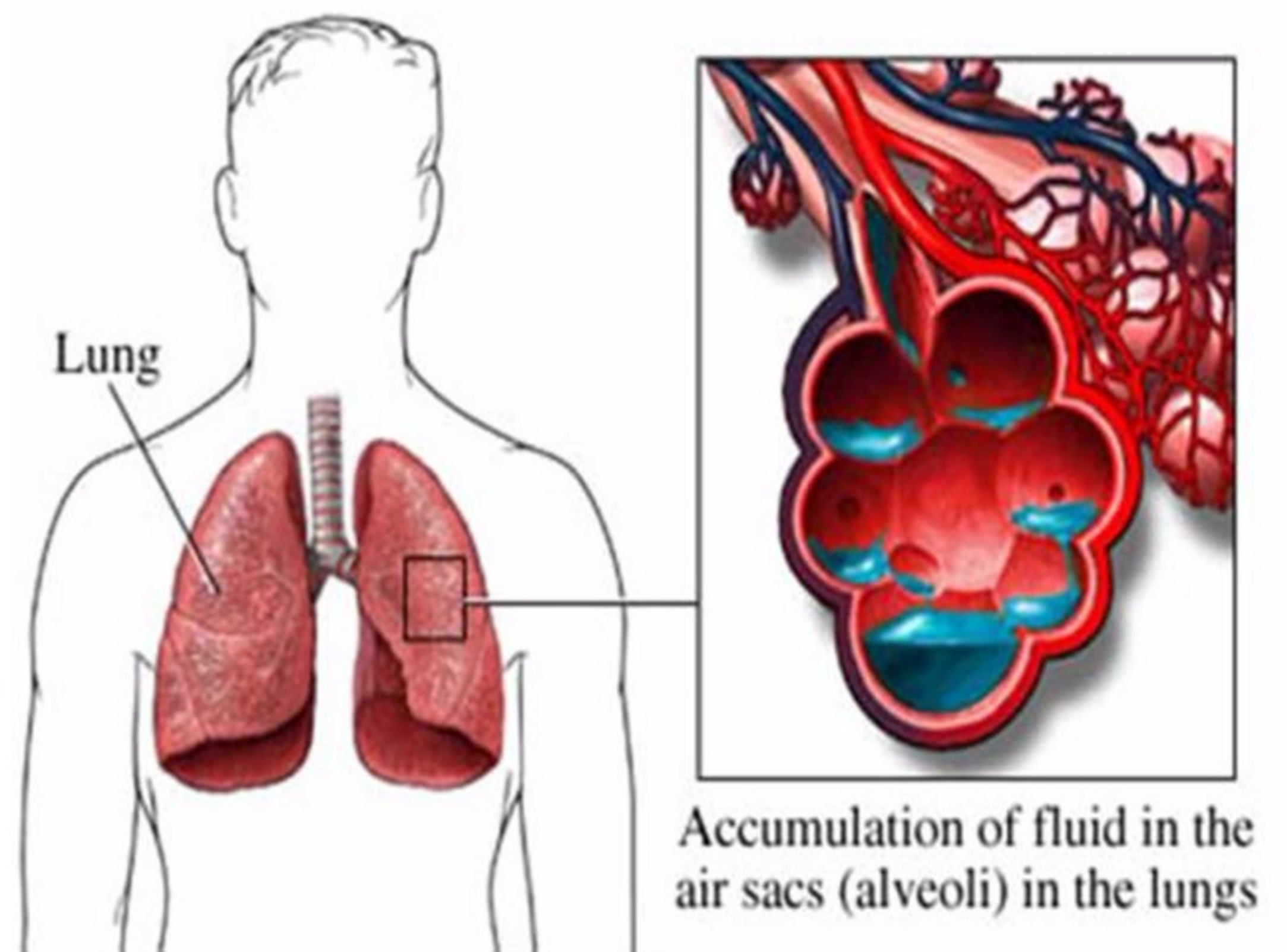
# 7 Signs & Symptoms of Congestive Heart Failure

## Shortness of Breath

Dyspnea at rest  
Difficulty laying flat  
Increased oxygen demands

## Pulmonary Congestion

Persistent cough  
Wheezing  
Blood-tinged mucous



## Fatigue

Decreased activity tolerance

## Confusion

Memory loss  
Disorientation

## Tachycardia

Increased heart rate at rest

Normal foot



Foot with edema



## Dependent Edema

Feet, ankle, and leg swelling  
Ascites  
Weight gain

## GI/GU Changes

Lack of appetite  
Nausea/Vomiting  
Nocturia