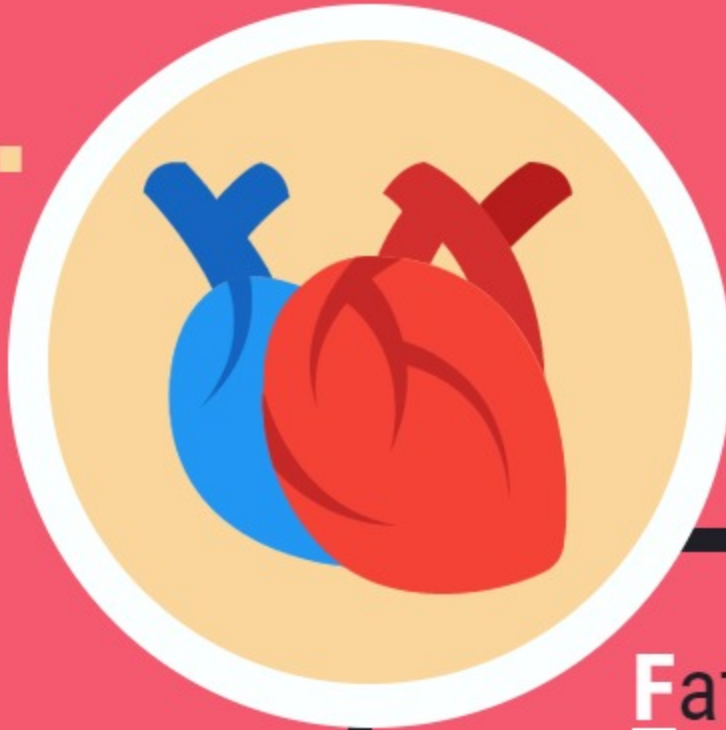


Don't Go Breaking My Heart

Preventing Readmission for Congestive Heart Failure

1.



Identify Residents at Risk

Look at their **FACES**

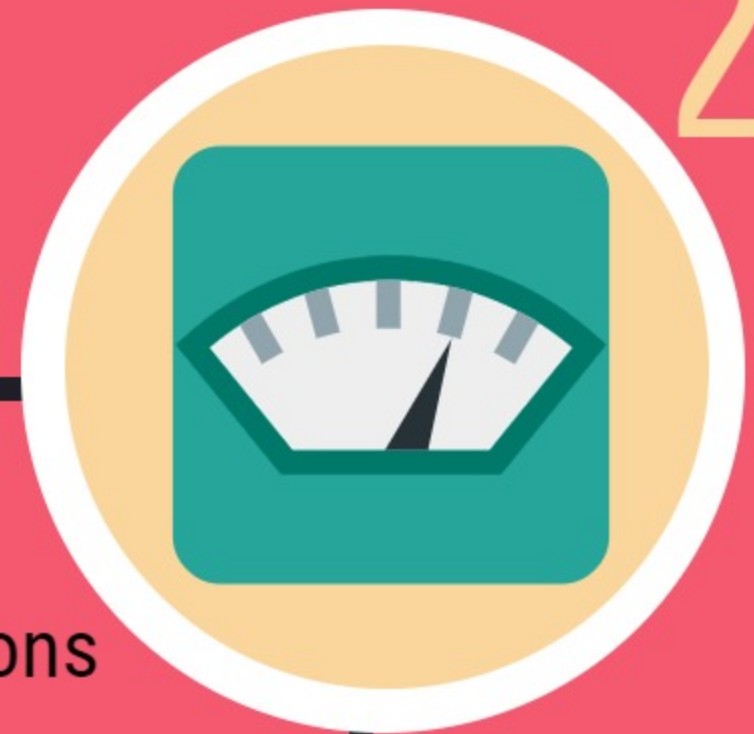
Fatigue **A**ctivity Limited **C**ough/Chest Congestion
Edema **S**hortness of Breath

Identify residents that are experiencing changes from baseline

Monitor for Changes

Check and Chart

2.



- ✓ Oxygen Saturation
- ✓ Intake and Output
- ✓ Heart and Lung Sounds
- ✓ Daily Weights
- ✓ Adverse Drug Reactions

Report any significant changes per facility policy

3.



Respond to Resident Needs

Treat it Right

Medications

- + Administer prescribed doses
- + Monitor for expected response

Nutrition

- + Limit sodium in diet
- + Monitor fluid intake

Education

- + Educate resident and family of risk factors and warning signs of worsening condition